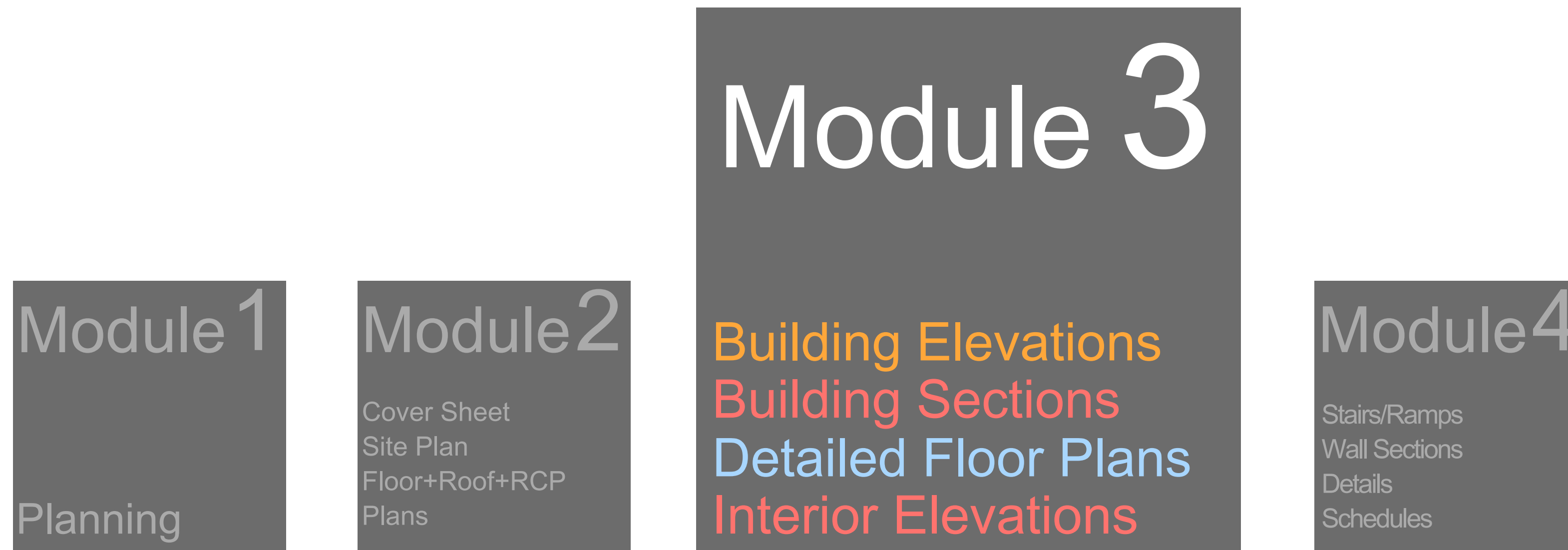


PRODUCTION OF A CONSTRUCTION DRAWING SET

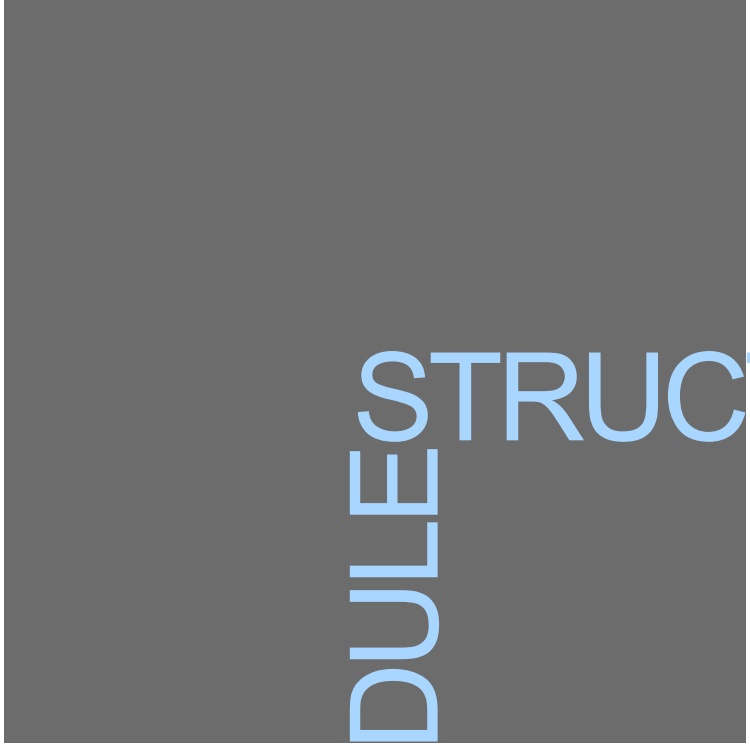


67 Lombard Street, Toronto Ontario, M5C 1M2, Canada. phone: 416.864.0404. e.mail: mail@arcad.on.ca

PRODUCTION OF A CONSTRUCTION DRAWING SET



view all series at www.arcad.on.ca/training



MODULES STRUCTURE

1. **Introduction**, drawing types for the module
2. **Content** of each drawing type, building up process
3. **Common errors** and omissions with possible solutions
4. **Check list** as a tool to review the work
5. **Bibliography** as a guide to research more in depth

CONSTRUCTION
DOCUMENTS
DRAWINGS
SERIES

A8
WALL
SECTIONS

A5
DETAILED
FLOOR
PLANS

A2
FLOOR
+ ROOF +RCP
PLANS

A10
SCHEDULES

A7
STAIRS
RAMPS

A4
BUILDING
SECTIONS

A1
SITE
PLAN

A9
DETAILS

A6
INTERIOR
ELEVATIONS

A3
BUILDING
ELEVATIONS

A0
COVER
SHEET

Scales:

$1/4'' = 1'-0''$

$1/8'' = 1'-0''$

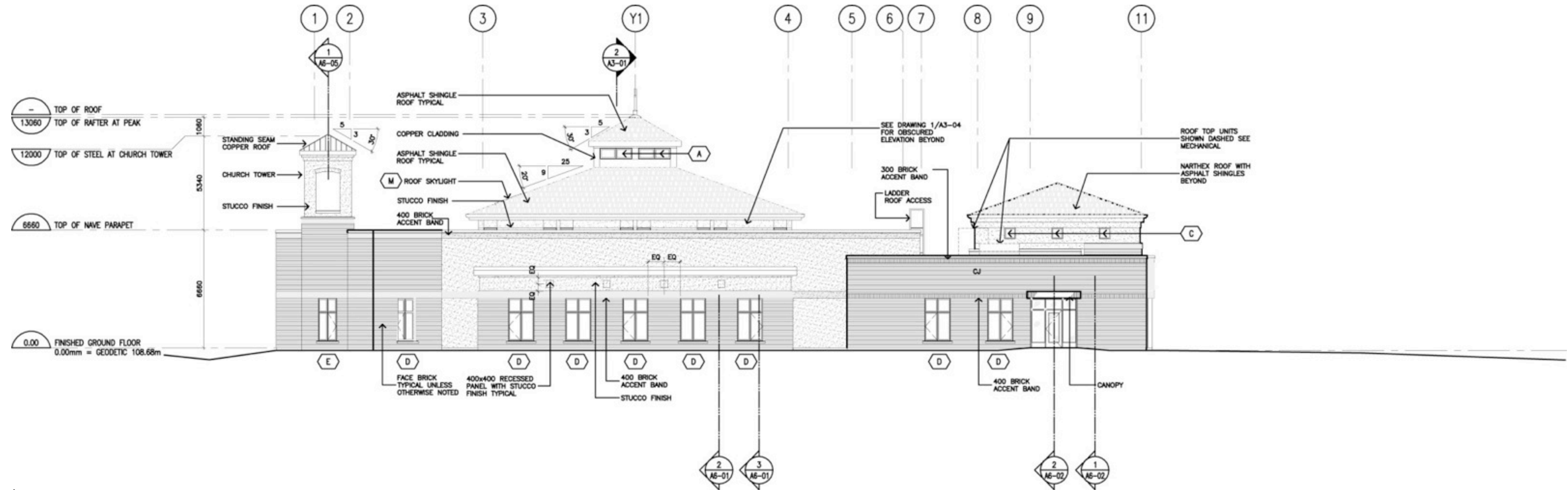
$1/16'' = 1'-0''$

1:50

1:100

1:200

- Grid lines with reference symbols, Elevation Floor Levels and grade
- Building edges, Openings
- Exterior Construction Materials
- Attachments: Light fixture, receptacles, Fire department connection, Signage, etc.
- Roof mounted Mechanical Equipment
- Vertical Dimensions and Roof slopes
- Cross references and Annotations



www.arcad.on.ca

OOPS

SMART

- **Grade Elevations** do not belong to the façade being drawn or to the face of the building
- **People and cars** are drawn on elevations

- **Make sure** grades belong to the façade being drawn, coordinate design and civil
- **Elevations** should show just technical information.

CHECK LIST

- **Grid** and Grid dimensions
- Line of **grade** at building face, (If building form is complex, identify parts of elevation by letter or number on location diagram in title block)
- Elevation **floor levels** for each floor level
- Below-grade foundation walls and **Footings** dotted
- **Openings** - Doors, Windows, Grilles, Vents
- **Attachments** - Light fixtures, Receptacles, Signage, Downspouts, Flagpoles, Siamese connections etc. as required.
- Exterior construction **materials** graphically and notations, Masonry control joints
- Roof mounted **mechanical equipment**
- Vertical **dimensions** - floor to floor, Doors/Windows/Other important items requiring location, Roof slopes
- **Annotations**
- **Cross references** to building sections, Wall sections and details

Scales:

$1/4'' = 1'-0''$

$1/8'' = 1'-0''$

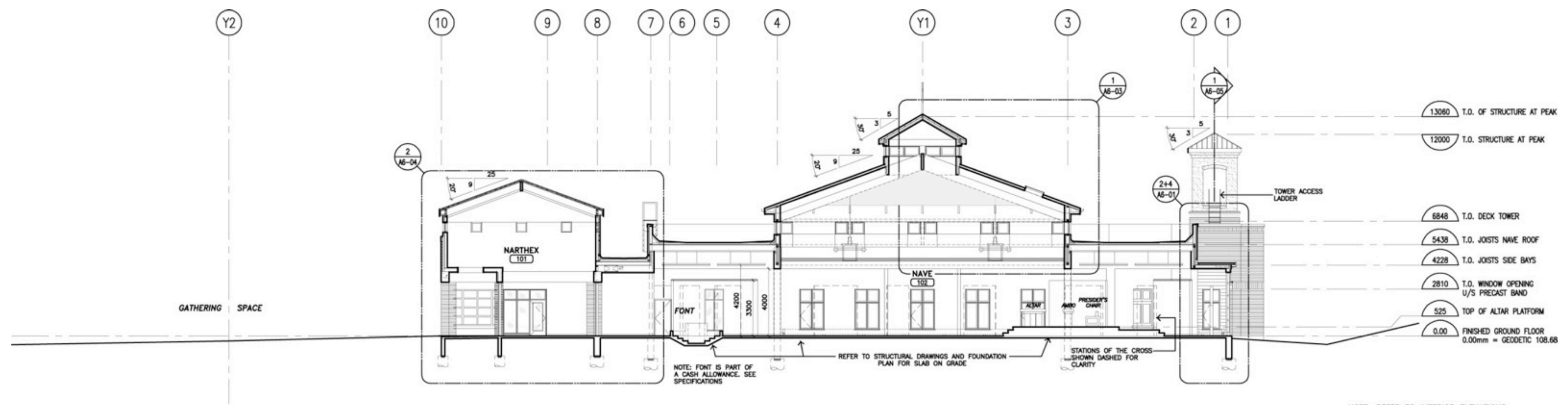
$1/16'' = 1'-0''$

1:50

1:100

1:200

- Grid lines with reference symbols, Elevation Floor Levels and grade
- Structural elements and Footings
- Building components
- Room Name and Number
- Vertical Dimensions and Roof slopes
- Cross references and Annotations



www.arcad.on.ca

OOPS

SMART

- **Missing** roof slopes
- **Missing or incorrect** footings

- **Coordinate** with **mechanical** for roof slopes direction and percentage
- **Coordinate** with **structural** for footings design.

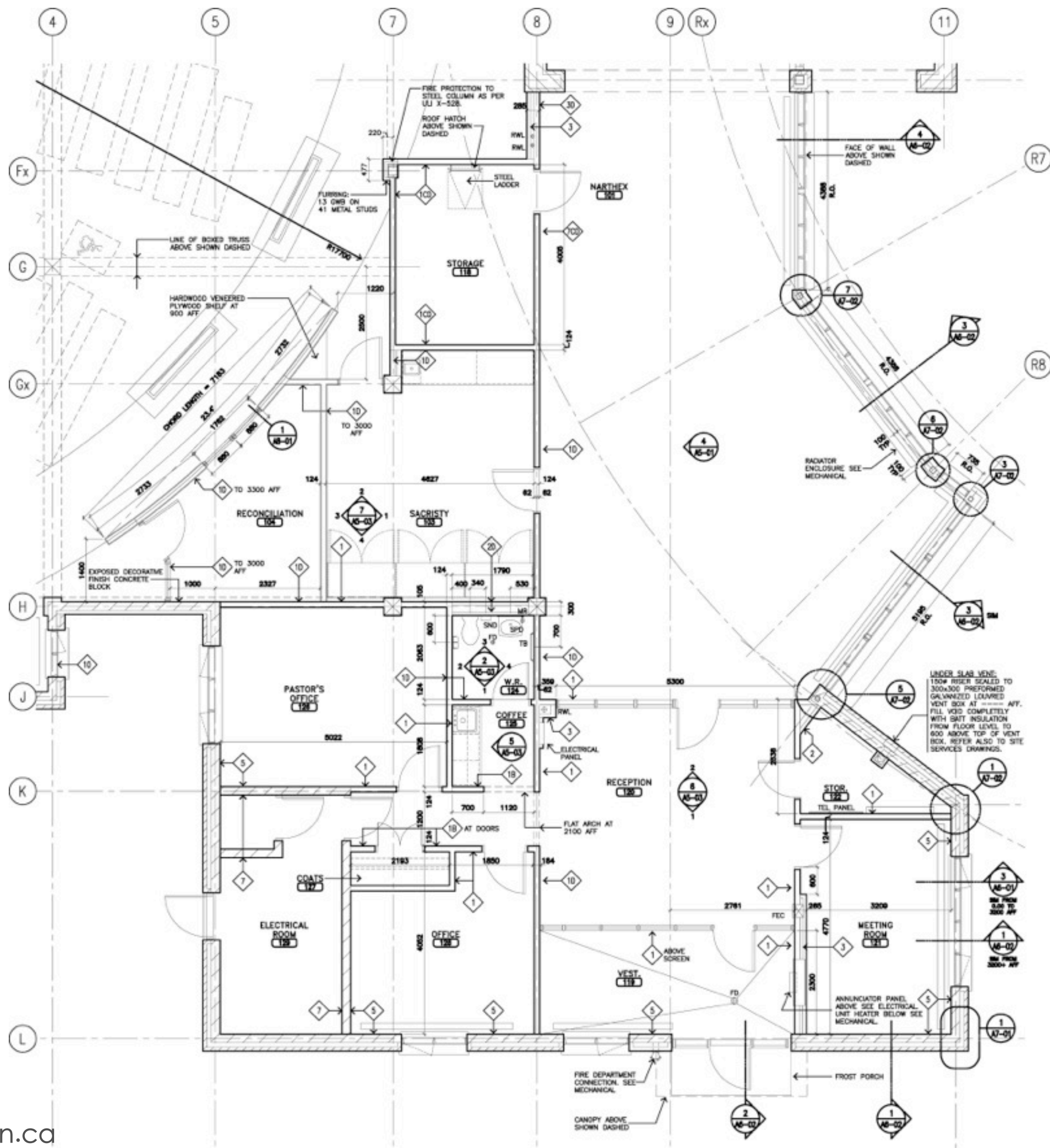
CHECK LIST

- **Grid** and Grid dimensions
- Elevation **floor levels** for each floor level, Roof bearing at walls, Grade at building, Bottom of footings.
- Structural elements, **Columns**, Floor slabs with edge of slab (E.O.S) coordinated with structural, Joists, Beams, Rafters, Roof trusses, Foundation walls and **Footings**
- **Openings** - Doors, Windows, Grilles, Vents.
- Roof mounted **mechanical equipment**, Heating/Ventilating/Air conditioning major equipment
- Vertical **dimensions** - Floor to floor, Floor to roof, Window openings, other important items requiring location, Roof slopes
- **Room names** and numbers
- **Annotations**
- **Cross references** to wall sections and details

Scales:

$1/4'' = 1' - 0''$

1:50



- Structural elements, Grid lines with reference symbols
- Envelope walls, Doors, Windows
- Interior walls, Doors, Interior hidden/Partial walls
- Materials/Accessories. Special floor finish layout, Patterns, Custom Fabricated Items, Manufactured Specialties
- Detailed dimensions
- Wall tags, Annotations
- Cross References

PARTITION SCHEDULE	
NOTE: ALL INTERIOR PARTITIONS ARE TO 1/2" STRUCTURE UNLESS NOTED OTHERWISE	
14 GYPSON BOARD 84 METAL STUD @ 480 O.C. 14 GYPSON BOARD	140 CONCRETE BLOCK
13 GYPSON BOARD 84 METAL STUD @ 480 O.C. 30x30x13 GYPSON BOARD SUSSETS VERTICALLY AT 1200 O.C. ONE SPACE (SAY VENTY WITHIN 10 PLANE) 84 METAL STUD @ 480 O.C. 30x30x13 GYPSON BOARD SUSSETS VERTICALLY AT 1200 O.C. 13 GYPSON BOARD	
14 GYPSON BOARD 84 METAL STUD @ 480 O.C.	
13 GYPSON BOARD 81 FURRING CHANNEL	75 1/2" OF ACT. CEILING
13 GYPSON BOARD (ANNAVED TO SUBSTRATE TO 150 ABOVE FINISHED CEILING OR 75 1/2" STRUCTURE IF NO CEILING	METAL STUD TO 1/2" STRUCTURE GAB TO 150 ABOVE FINISHED CEILING
140 CONCRETE BLOCK	1 HOUR FIRE RATED PARTITION WITH 100 SOUND BATTIS AND CLIPS

www.arcad.on.ca

OOPS

SMART

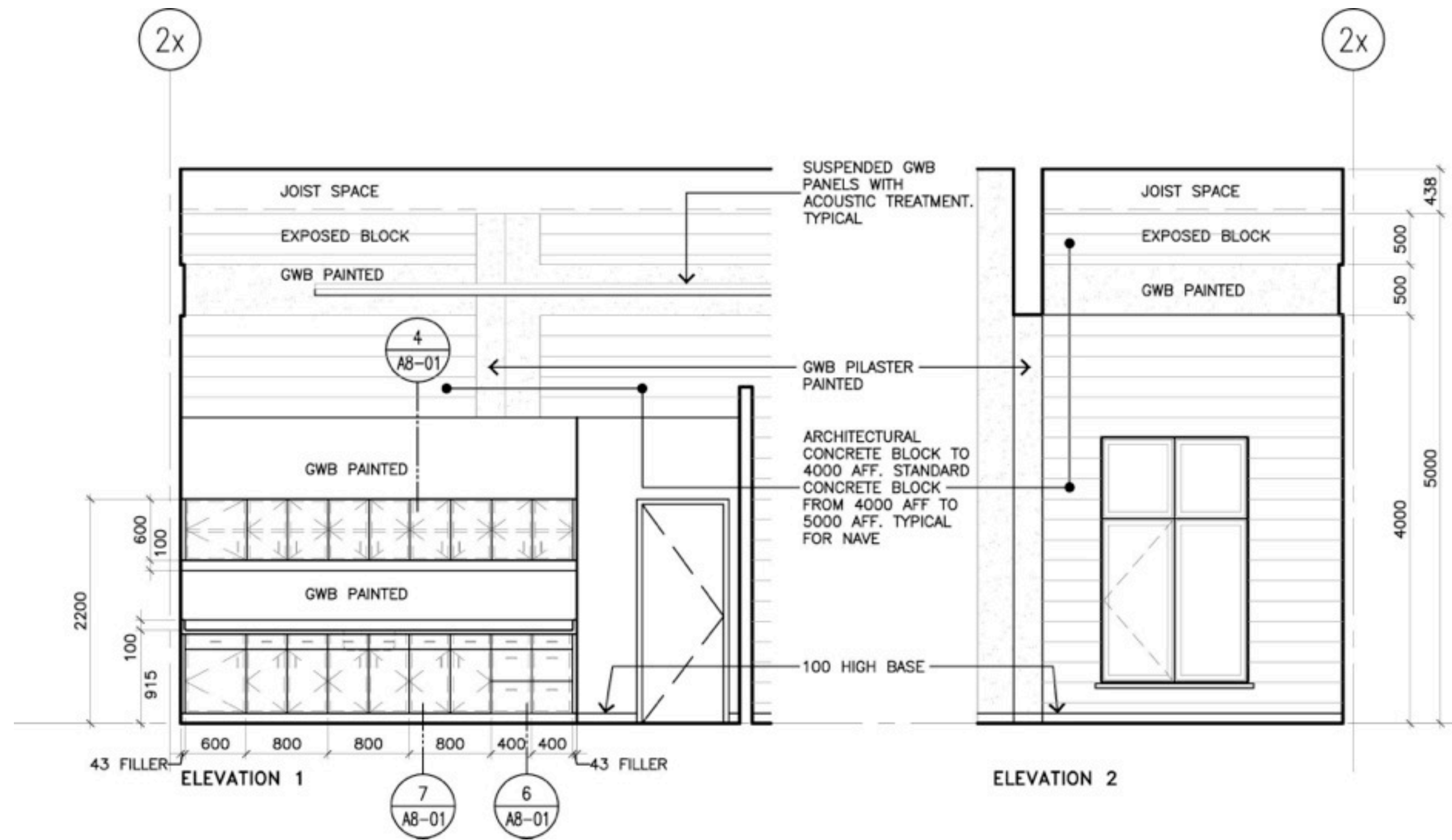
- **Grid** is missing
- **Door numbers** and tags are duplicated
- **Make sure** enlarged plans are drawn with the grid and overall dimensions are in reference to it
- **Define** what drawing (scale) the door numbers and tags are on to avoid duplicated information.

CHECK LIST

- **Grid** and Grid dimensions
- Structural elements, **Columns**
- **Envelope walls**, Doors, Windows
- **Interior walls**, Doors, Windows, Hidden/Partial walls
- Materials/Accessories. Special **floor finish** layout, Patterns,
- **Custom Fabricated Items**, Manufactured Specialties
- Detailed **dimensions**
- **Wall tags**
- **Room Names** and Numbers
- **Annotations**
- **Cross References** to wall sections and details

Scales:
1/4" = 1'-0"

1:50



- **Grid lines** with reference symbols
- **Outline walls**, Openings, Glazed Screens
- **Cabinetwork**, Wall-mounted items, Special Equipment, Paneling, Grilles, Louvers, Thermostats, Other Mechanical Items, Switches, Receptacles, Electrical Panels
- **Materials**
- **Detailed dimensions** and **Annotations**. Horizontal dimensions to cabinetwork, Vertical dimensions to locate wall-mounted items, Paneling.
- **Cross References**

OOPS

SMART

- **Missing** grid
- **Incomplete** mechanical/electrical items
- **Make sure** interior elevation is drawn with the grid
- **Coordinate** with mechanical and electrical all equipment and items to be place on interior elevations.

CHECK LIST

- **Grid** and Grid dimensions
- Outline walls, **Openings**, Doors glazed screens
- Materials/**Accessories**
- **Cabinetwork**, Wall-mounted items, Paneling
- Special Equipment, Grilles, Louvers, Thermostats, Other Mechanical Items
- Switches, Receptacles, Electrical Panels
- **Custom Fabricated Items**, Manufactured Specialties
- Detailed **dimensions**, Horizontal dimensions to cabinet work, Vertical dimensions to locate wall mounted items, Paneling
- **Annotations**
- **Cross references** to wall sections and details

CANADIAN HANDBOOK OF
PRACTICE FOR ARCHITECTS

ARCAD STANDARDS, CUSTOMIZATION
AND WORKING DRAWINGS
www.arcad.on.ca

LARKIN ARCHITECT LIMITED (DESIGN)

POWERS OF TEN
www.powersof10.com

GOOGLE MAPS

bibliography



Educational series: **Free download PDF version of this presentation at www.arcad.on.ca/training**

MAY 2012

This series is intended to clarify architectural working drawings production and development and the slides represent a compressed summary of the complete version of a working drawing set. For a more detailed guide, a review of the Canadian Handbook of Practice for Architects is highly recommended.