

PRODUCTION OF A CONSTRUCTION DRAWING SET



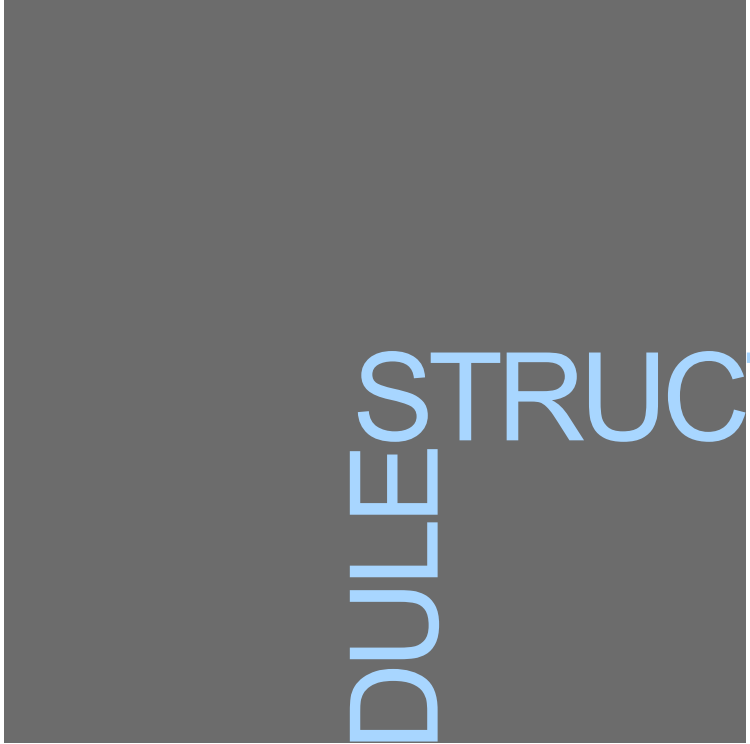
67 Lombard Street, Toronto Ontario, M5C 1M2, Canada. phone: 416.864.0404. e.mail: mail@arcad.on.ca

A
GUIDE FOR
YOUNG
ARCHITECTS

PRODUCTION OF A CONSTRUCTION DRAWING SET

Module 1	Module 2	Module 3	Module 4
Introduction + Planning	Cover Sheet Site Plan Floor+Roof+RCP Plans	Building Elevations Building Sections Detailed Floor Plans Interior Elevations	Stairs/Ramps Wall Sections Details Schedules

view all series at www.arcad.on.ca/training



MODULES STRUCTURE

1. **Introduction**, drawing types for the module
2. **Content** of each drawing type, building up process
3. **Common errors** and omissions with possible solutions
4. **Check list** as a tool to review the work
5. **Bibliography** as a guide to research more in depth

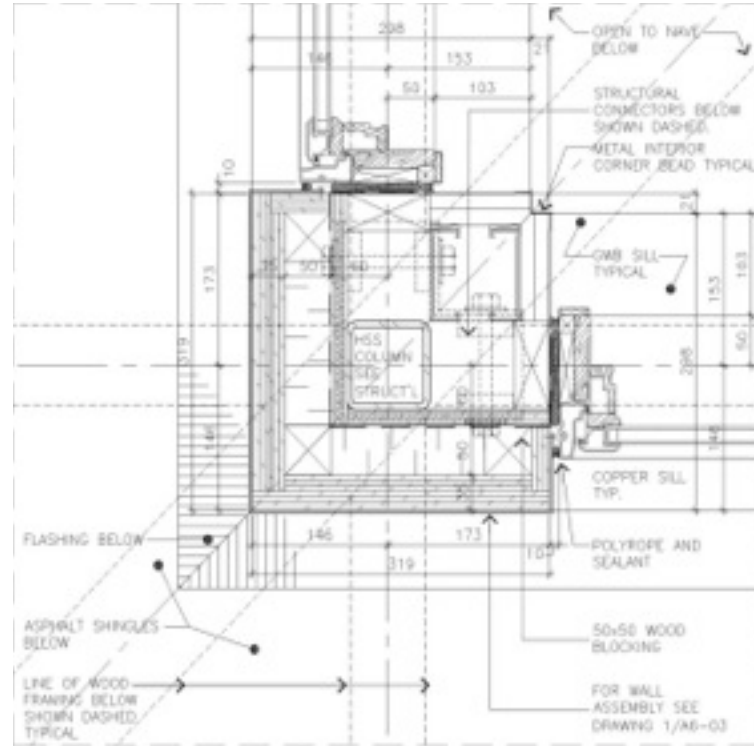
“THE ARCHITECT MUST BE
DESIGNER, CONSTRUCTION
EXPERT AND MANAGER”...

Canadian Handbook of Practice for Architects
CHOP

DETAILING A BUILDING...
THE ART OF ZOOMING IN

Powers^{OF TEN}

Ray and Charles Eames -1968

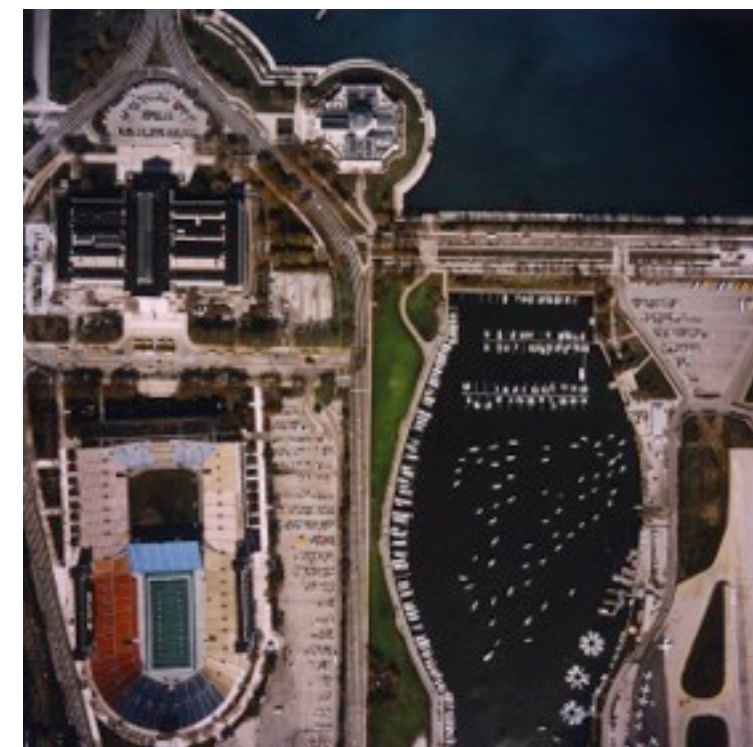
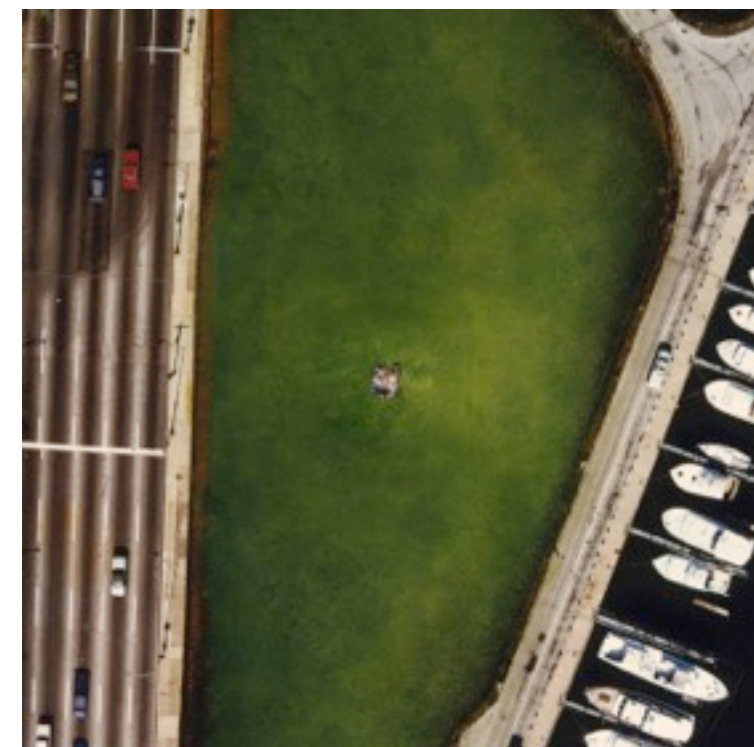
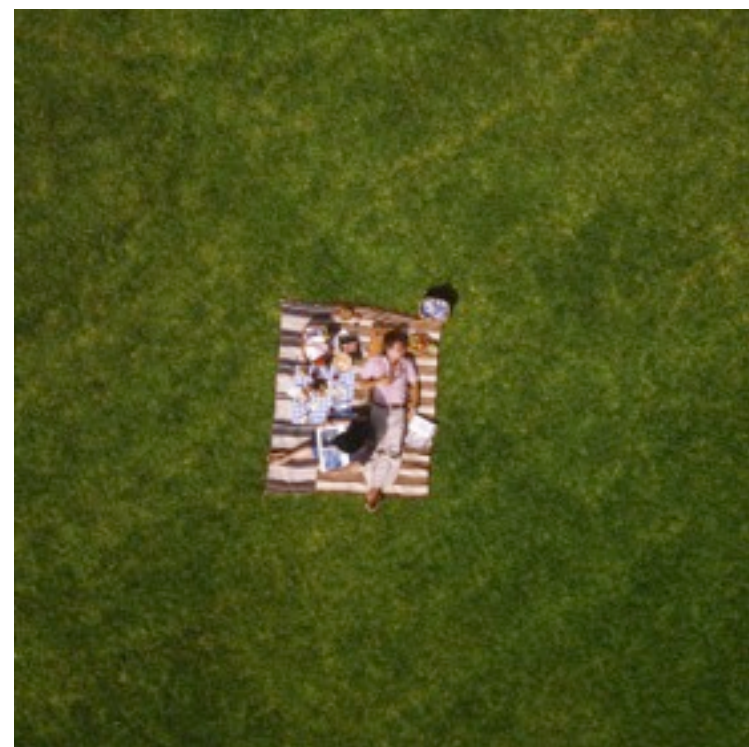


10^{+00}

10^{+01}

10^{+02}

10^{+03}



CONSTRUCTION
DOCUMENTS
DRAWINGS
SET UP

8

PLANS, SECTIONS,
ELEVATIONS, DETAILS,
SCHEDULES

5

LIST OF DRAWINGS,
NUMBERING &
SIZES

2

OFFICE STANDARDS

10

REVIEW OF
DRAWINGS

7

NOTES, SYMBOLS
AND DIMENSIONS

4

SCALES

1

CAD STANDARDS

9

COORDINATION
OF DRAWINGS

6

TITLE BLOCK

3

ORGANIZATION
OF THE DRAWINGS

0

PLANNING THE
PRODUCTION OF
WORKING DRAWINGS

CONSTRUCTION
DOCUMENTS
DRAWINGS
SERIES

A8
WALL
SECTIONS

A5
DETAILED
FLOOR
PLANS

A2
FLOOR
+ ROOF +RCP
PLANS

A10
SCHEDULES

A7
STAIRS
RAMPS

A4
BUILDING
SECTIONS

A1
SITE
PLAN

A9
DETAILS

A6
INTERIOR
ELEVATIONS

A3
BUILDING
ELEVATIONS

A0
COVER
SHEET

OOPS

SMART

- **Skip** planning phase
- **Lack** of cad standards
- Office **standards** are **not defined or followed**
- Sheet size, detail reference location, scales **not defined**
- **Not Time** to check drawings
- **Allow** time and budget for the planning. It will ensure savings in the project
- **Define** a clear and closed cad standards where users can't avoid them
- Define office standards and **work as a team**
- Set up drawings organization **rules**
- Allow time **on schedule** to check drawings.

CHECK LIST

- **Budget**, team members, space, hardware, software, resources available to the consultants
- **Production Schedule** allowing time for drawings check before every submitting
- **Standards** for drawings and plots
- **Protocols** for the exchange of information
- General **coordination method**
- **Determine** what drawings and information must be produced
- Drawings **control log**/time per drawing
- Assign **tasks**
- Set **project Schedule**
- **Coordinate** work with all team members
- **Office standards**, cad standards, protocols and filing system
- Define **drawings organization**, scales, list of drawings, numbering, titles, sheet sizes, title block, references location, notes, symbols, method of dimensioning

CANADIAN HANDBOOK OF
PRACTICE FOR ARCHITECTS

ARCAD STANDARDS, CUSTOMIZATION
AND WORKING DRAWINGS
www.arcad.on.ca

LARKIN ARCHITECT LIMITED (DESIGN)

POWERS OF TEN
www.powersof10.com

GOOGLE MAPS

bibliography



Educational series: **Free download PDF version of this presentation at www.arcad.on.ca/training**

MAY 2012

This series is intended to clarify architectural working drawings production and development and the slides represent a compressed summary of the complete version of a working drawing set. For a more detailed guide, a review of the Canadian Handbook of Practice for Architects is highly recommended.